

veterans resource center | student activities center

09 MAY 2017

BOARD OF TRUSTEES MEETING



NORTH ORANGE COUNTY COMMUNITY COLLEGE DISTRICT

Cypress College VRC & SAC | **LPA**

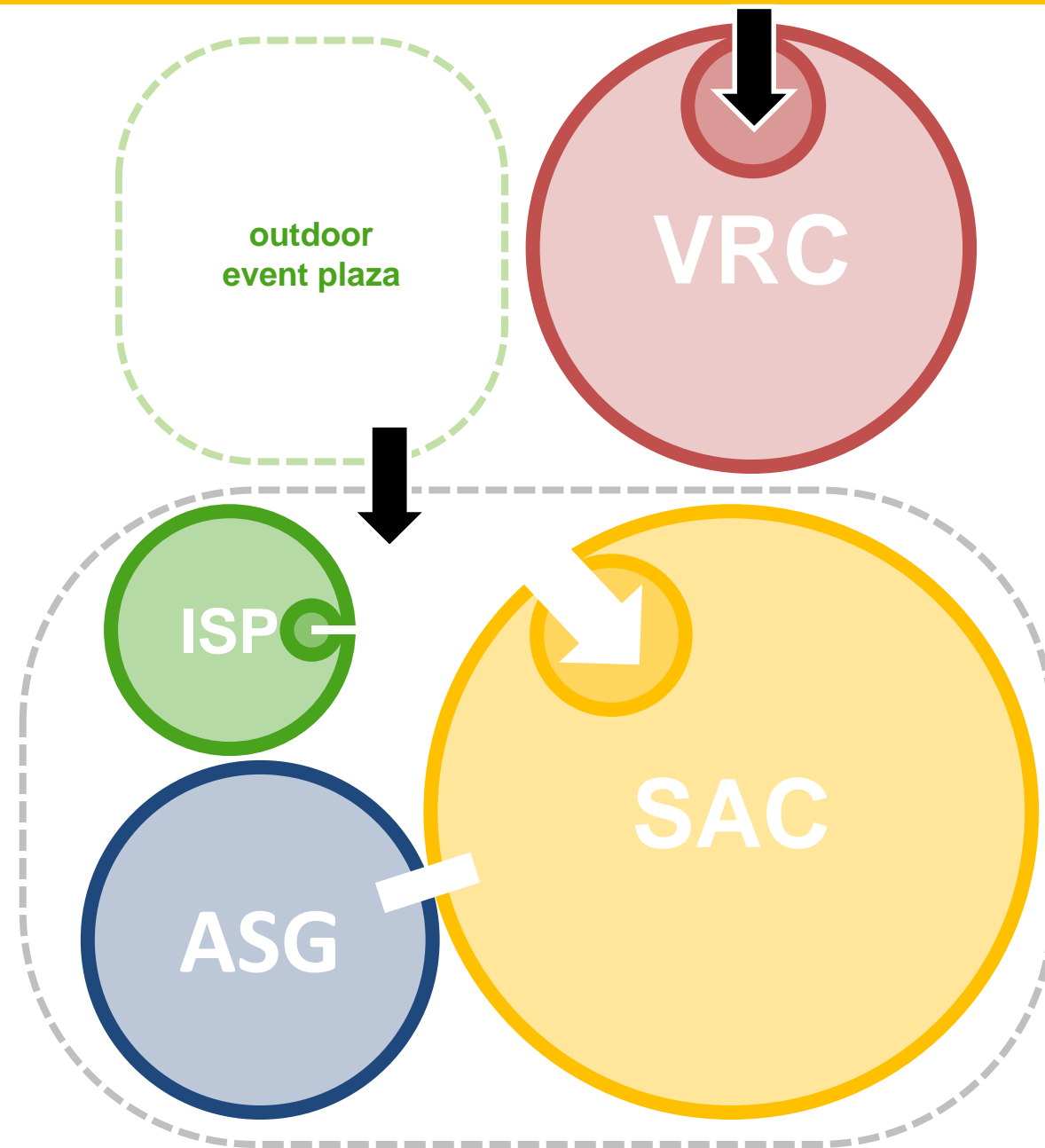
process | building program

DESCRIPTION	QTY	ASF	SUBTOTAL	NOTES/ COMMENTS
Section 1.0		Student Activities Center		
Reception	1	104	104	
Student Recreation/Game Room	1	2,095	2,095	
Lounge/Multi-Purpose Activity Room	1	796	796	lounge, general storage and work room from ASG
Large Conference Room	1	822	822	seats for 12-45 people
Kitchen/Workroom/Storage	1	266	266	
Advisor's/Manager's Office	1	120	120	
	796		4,203	
Section 2.0		Veterans' Resource Center		
Reception	1	154	154	
Common Room	1	724	724	lounge, group tables, kitchenette and storage
Meeting Room	1	288	288	
Computer Lab	1	344	344	
Study Room	1	151	151	
Office	4	110	440	1 coordinator/counselor, 3 counselors
Restroom	2	68	136	
			2,237	
Section 3.0		Associated Student Government		
Work Area	1	1,124	1,124	14 work stations, group work tables and storage
Food Pantry/Storage	1	123	123	mobile, adjustable storage; no cold storage
			1,247	
Section 4.0		ISP International Student Program		
Reception	1	150	150	2 work stations with 3 lateral file cabinets
Student Lounge	1	220	220	includes lockable storage
Manager's Office	1	114	114	
Counselor's Office	1	71	71	
			555	
Section 5.0		Outdoor Spaces		
Social Spaces				large group and small group varieties
Student Life Plaza*				multi-functional event space
Memorial Bridge**				
Veterans' Memorial**				
Program Total		Total ASF	8,242	Total ASF (Assignable Sq.Ft.)
		Total GSF	12,119	Total GSF (Gross Sq.Ft.) @ 68% Eff.

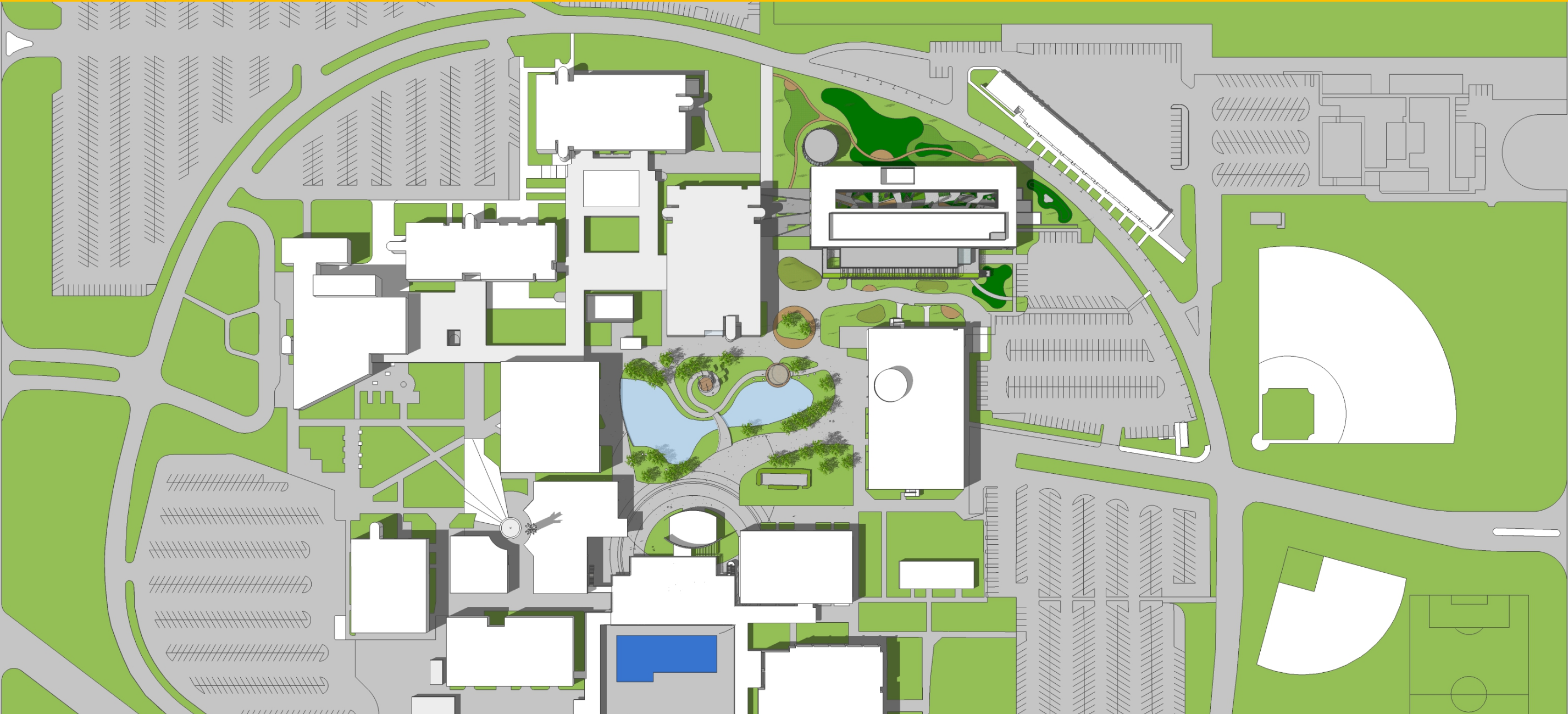
Existing GSF : 6,950 SF
Additional GSF : 5,169 SF
Total GSF : 12,119 SF



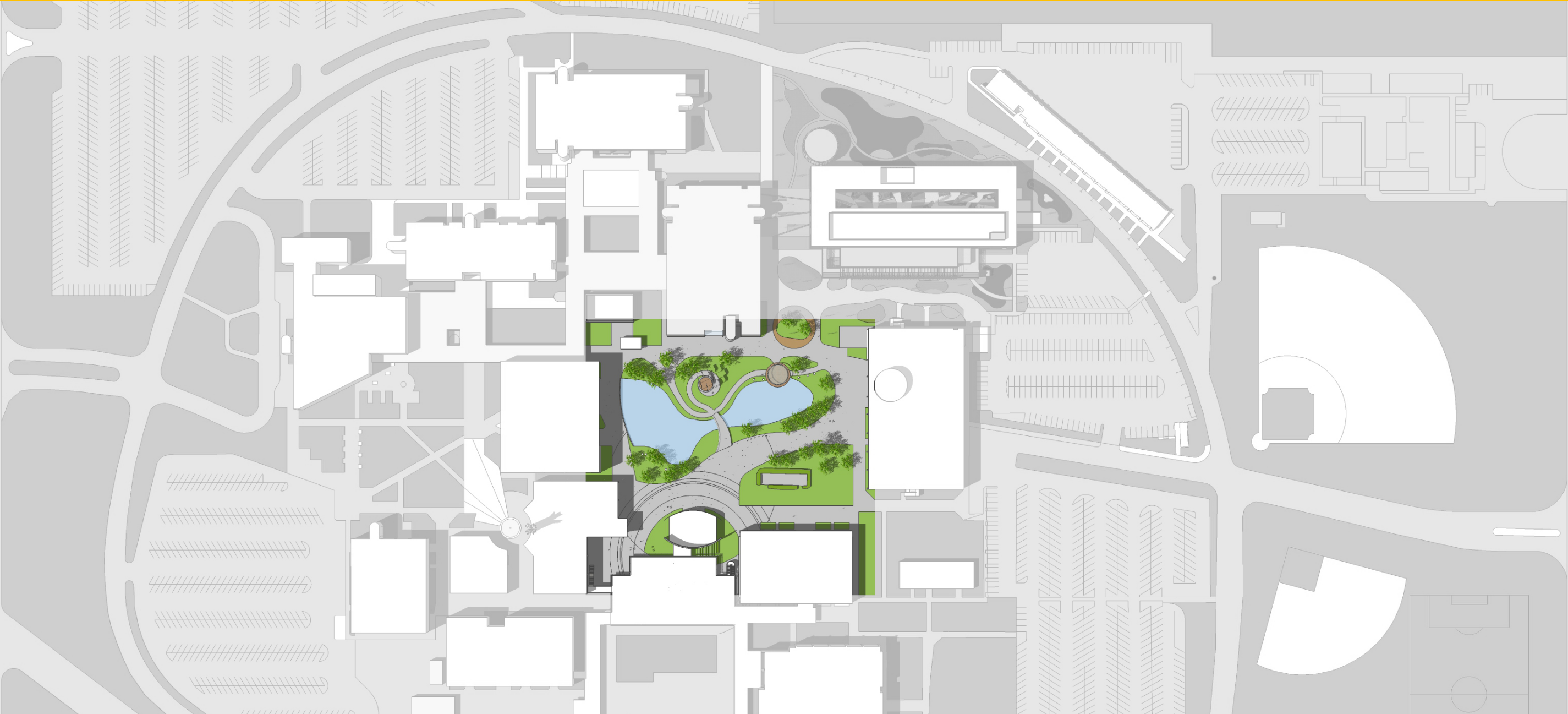
process | program adjacencies



zoom out | site plan



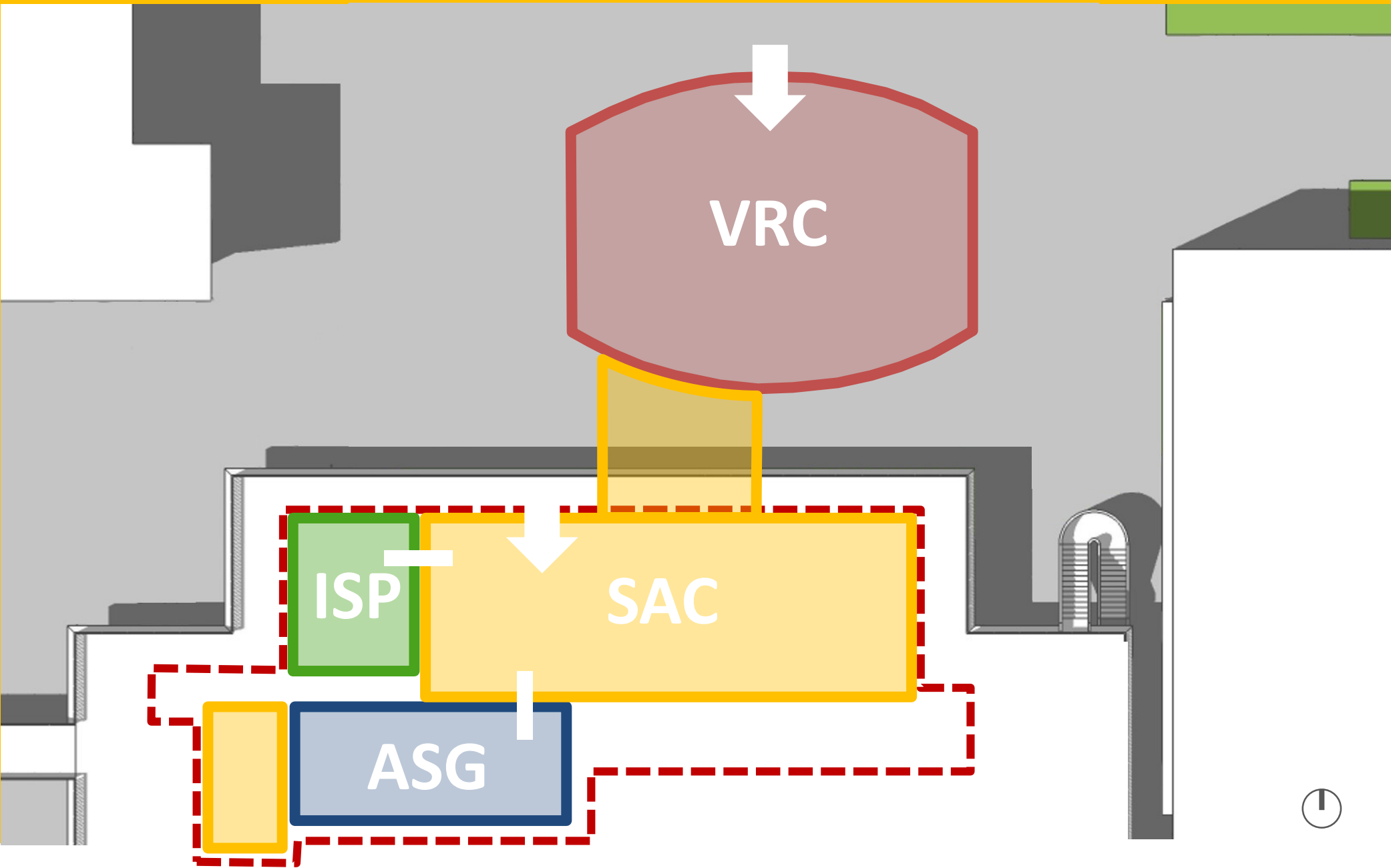
zoom out | site plan



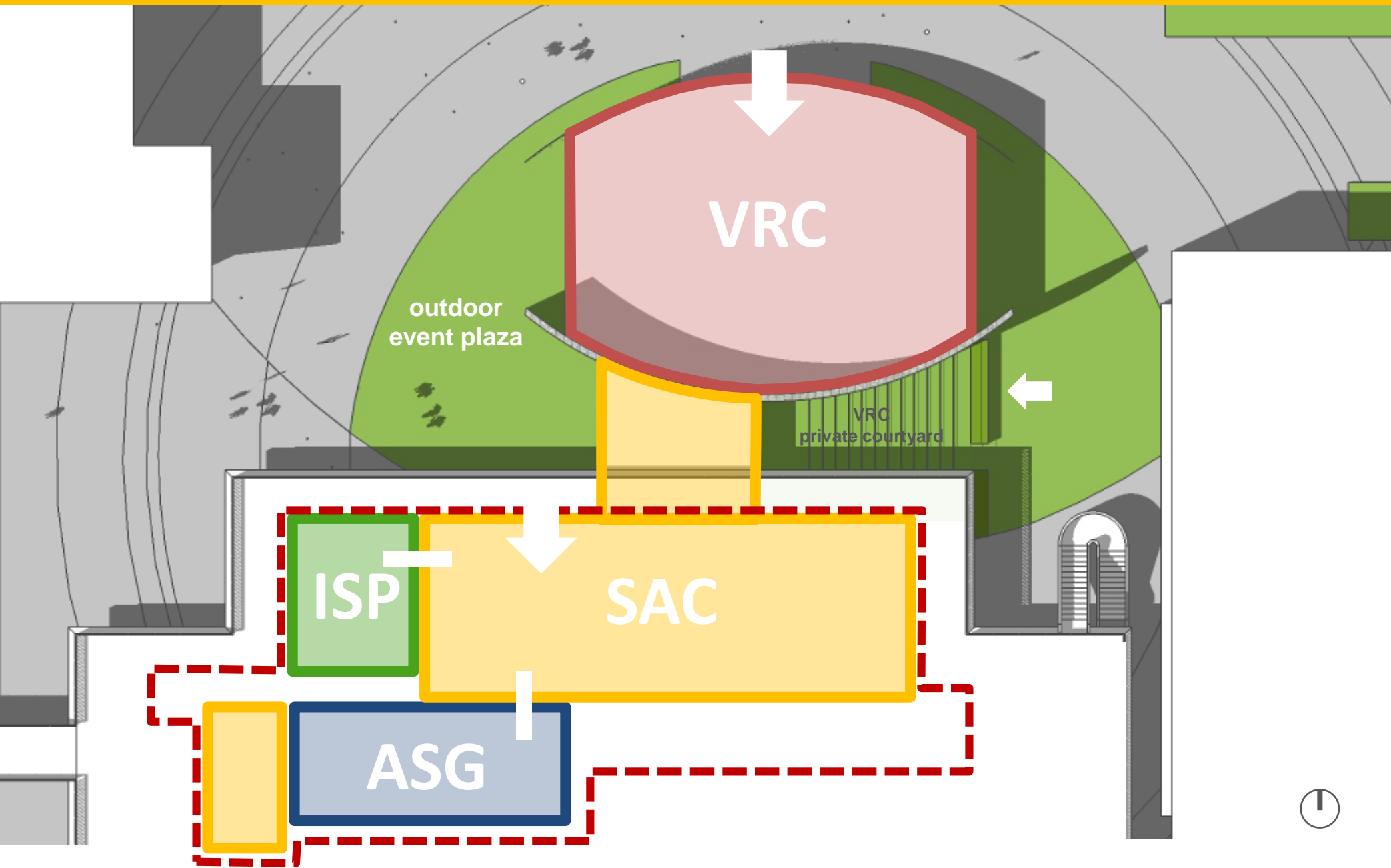
zoom out | site plan



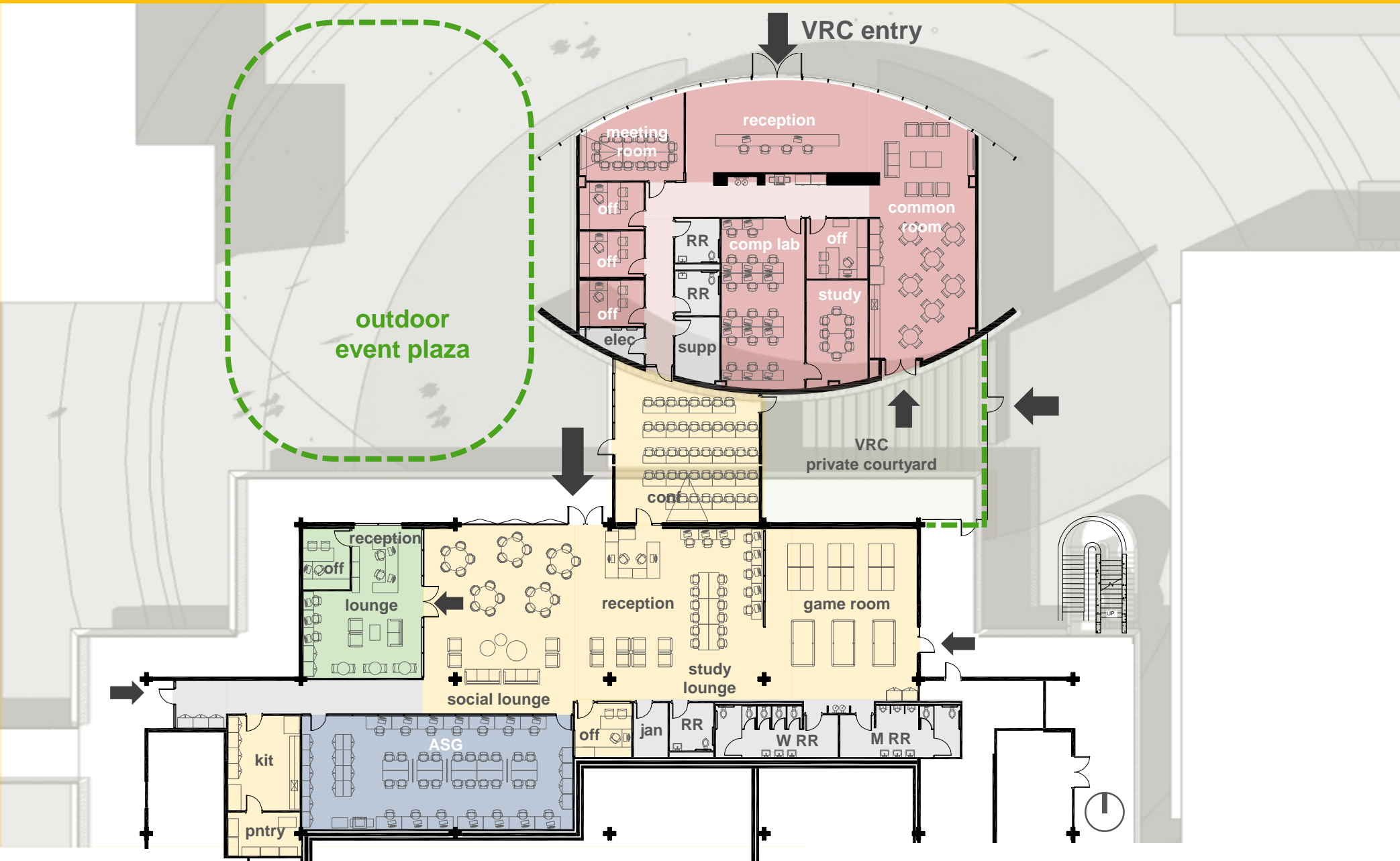
zoom in | plan adjacencies



zoom in | plan adjacencies

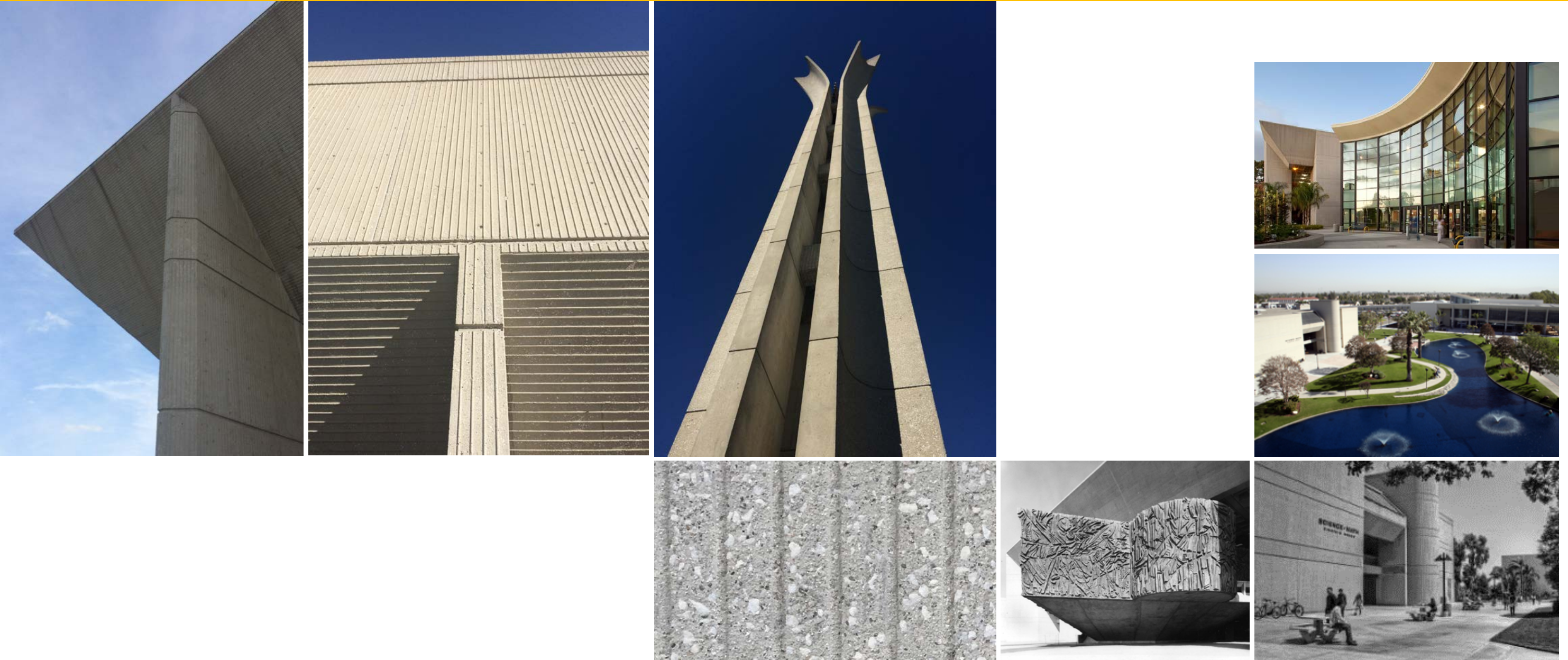


zoom in | floor plan



- veterans' resource center
- student activity center
- international student program
- associated student government
- building support

process | campus context



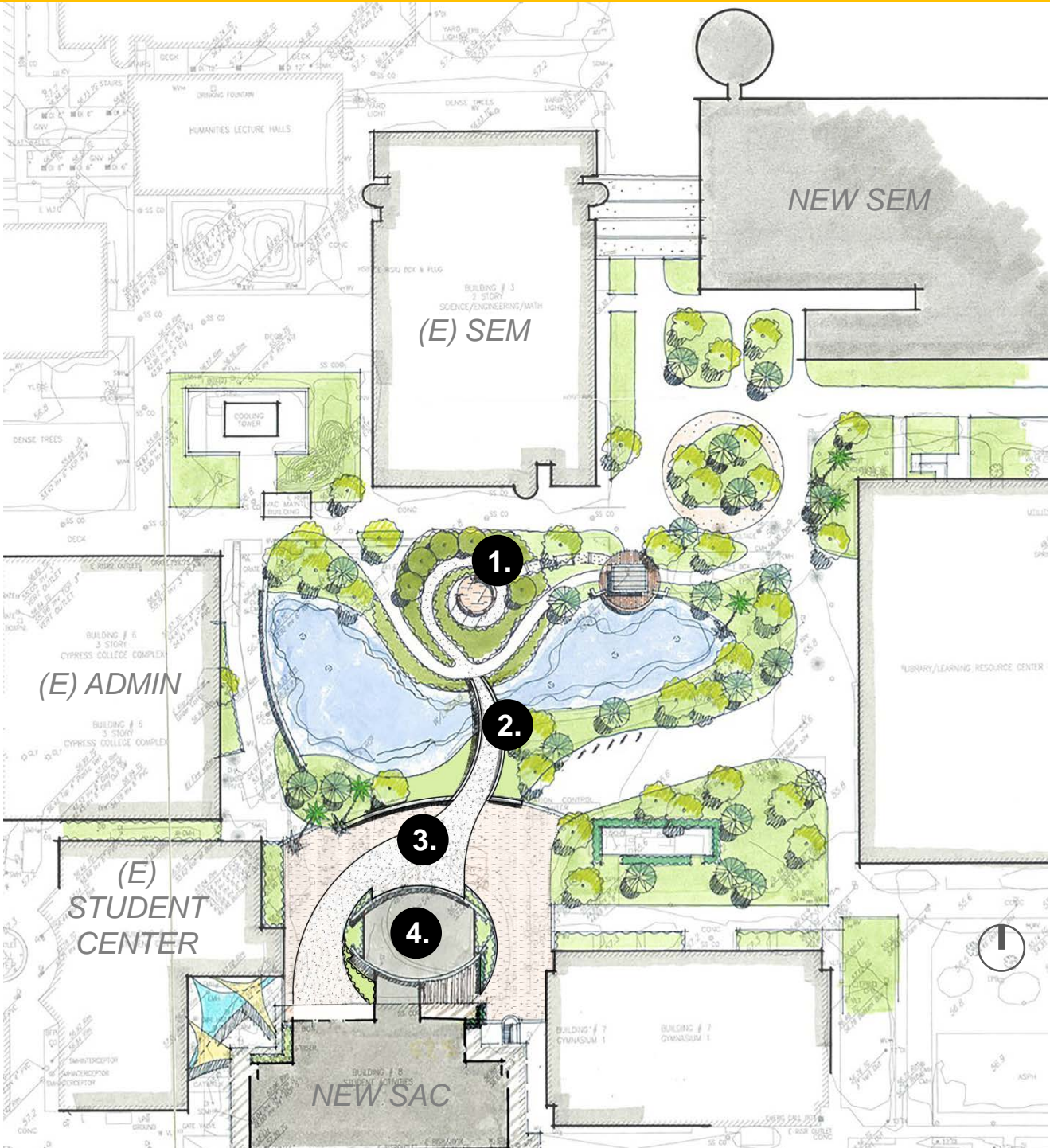




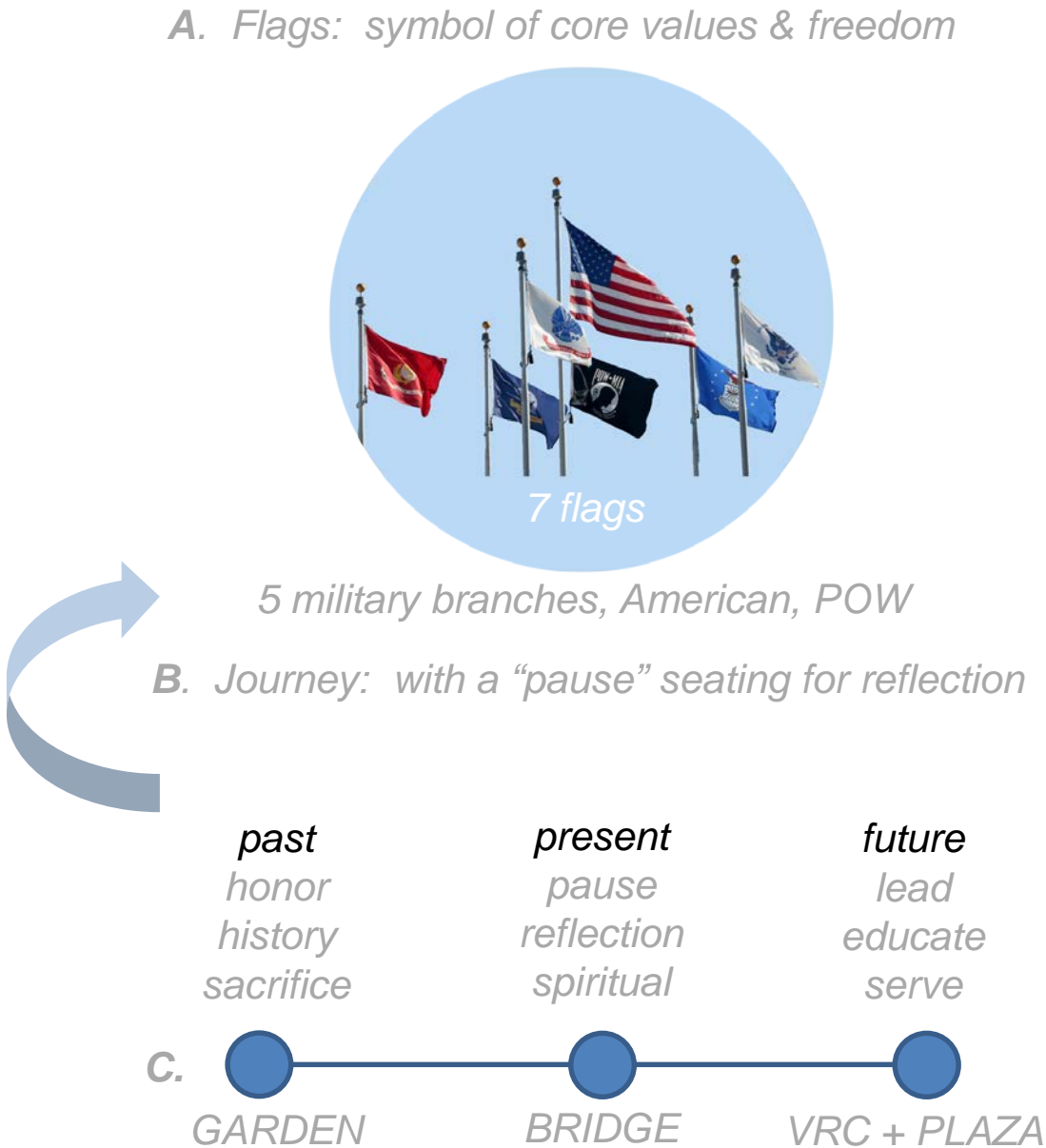


VETERANS RESOURCE CENTER

zoom out | veterans memorial



- 1. Tribute Garden
- 2. Veterans Memorial Bridge
- 3. Outdoor Event Plaza
- 4. Veterans Resource Center





veterans resource center | student activities center

Thank You!



NORTH ORANGE COUNTY COMMUNITY COLLEGE DISTRICT

Cypress College VRC & SAC | **LPA**